

MARMO+MAC

27/30
SEPT 2022
VERONA
ITALY

MA

Mousavi Architects
دفتر معماری ما

 veronafiere
Trade shows & events since 1890



Ancient Hamedan / Hegmataneh



Ancient Hamedan

Before 1927



Hamedan After the changes of Karl Frisch's plan

1927

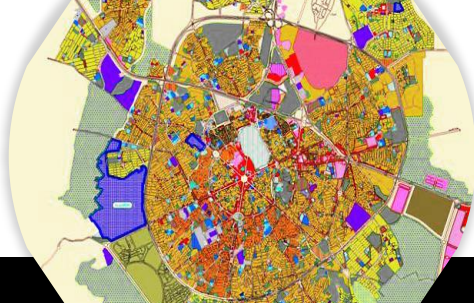
Central Square

1927 & Now



Mojda Master plan

1990



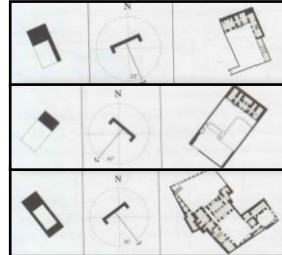
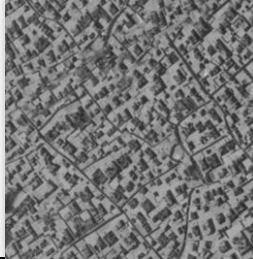
Based on Zoning/ Modern urban Planning

Hamedan today

Interaction of 3 layers

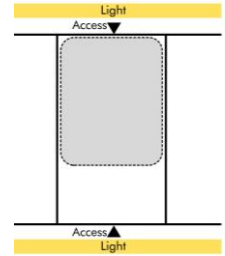
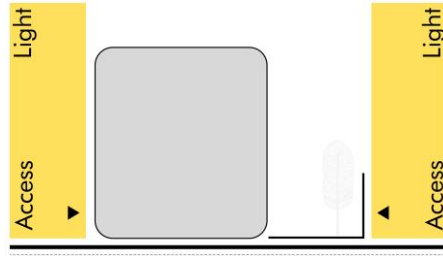
Traditional Layer
Karl Frisch's Layer
Master Plan Layer

3 Forms of the Typology of Traditional Houses in Hamedan



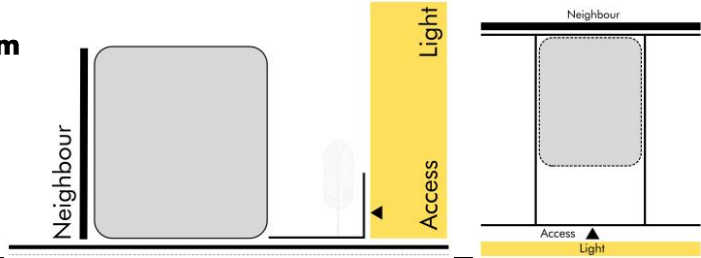
Two Side Access House Diagram

Lands With Light And Access From Two Sides.



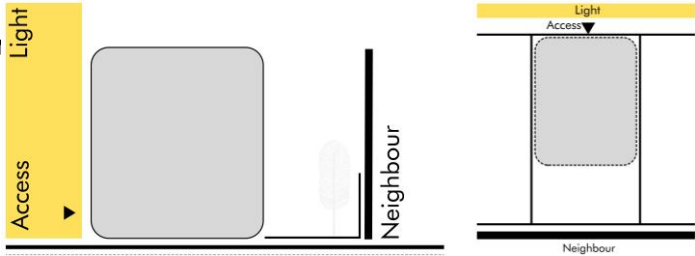
Northern House Diagram

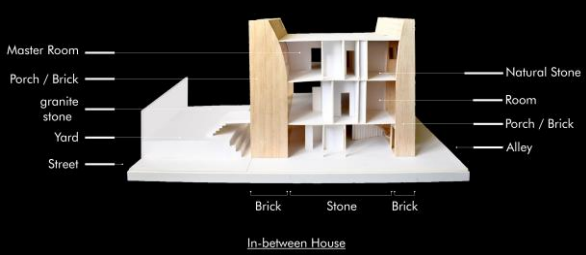
Lands Based On Light And Access From One Direction.



Southern House Diagram

Lands Based On Light From Two Sides But Access From One Direction.





In-between House/ Farajian House

Land With Light And Access From Two Sides.

In-between House/ Farajian House

House designed to the city and a definition of placing the space instead of the wall



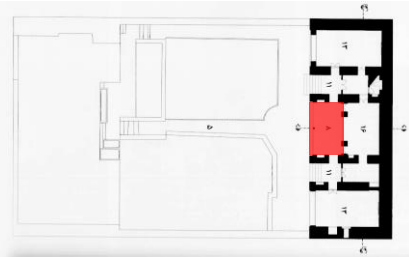


Outside-in House/ Moradi House

Land Based On Light From Two Sides But Access From One Direction.

Ghazanfari House

About 180 years ago/ with Eyvan





Inside-out House/ Rafiee House

By relocating the light-filled empty space to the center of the house and connecting it to another middle horizontal space that plays the role of a semi-enclosed yard.



Inside-out House/ Rafiee House

The employer's family can form collective family activities together in a , semi-enclosed space.



Inside-out House/ Rafiee House

Possible to see the sky which is not possible for the residents in most of today's houses.



Inside-out House/ Rafiee House

Exterior Coating Material : natural stone has been used as the main covering material: grooved granite stone has been used to cover the exterior of the courtyard wall, unpolished granite stone and white travertine have been used to cover the courtyard, white travertine stone with Hondo polish has been used for the main facade, and raw orange travertine stone is used for the empty space in the middle.